



Company Profile

>> Who are we:

Established at the beginning of 2007, JoVision provides complete solutions for industrial tasks including Quality Control and Non Destructive Testing (NDT). At JoVision a small team of highly qualified engineers is working to provide customers with innovative solutions for raising product quality & production efficiency.

JoVision is deeply involved in developing algorithms and solutions for Objects Recognition, a commonly encountered application in Computer Vision where the verdict whether the image data contains a specific object, feature, or activity is of huge importance.

JoVision offers Intelligent Image decomposition tools to support customers in the analysis and interpretation of images on different scales. Our solutions enable customers to have:

- > *Rapid Image Analysis*
- > *Deeper Conception of the Image Content*
- > *Better Decision Making*

Currently, the tire industry is the main focus of JoVision, our products are based on both Laser and X-Ray sensors and provide a semiautomated/automated solution for anomaly detection.

>> Our Mission:

Our mission is to provide the customer with a highly accurate, efficient, reliable, and cost-effective solution. Raising Product quality and production efficiency is the center of our attention, therefore we are committed to using pioneering technology and to develop, test and apply modern algorithms to offer creative solutions satisfying customer needs and maintaining a cutting edge in the market.

On the quality side, we assure our customers that the company policy targets the improvement of our quality system and the adherence to the following Quality Policy guidelines:

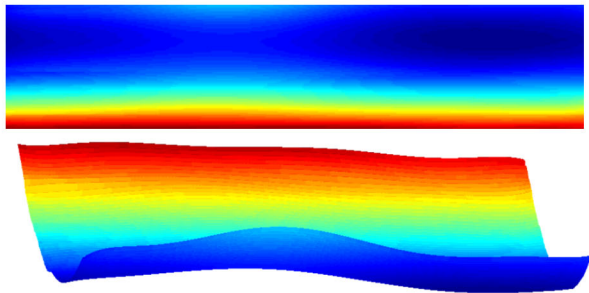
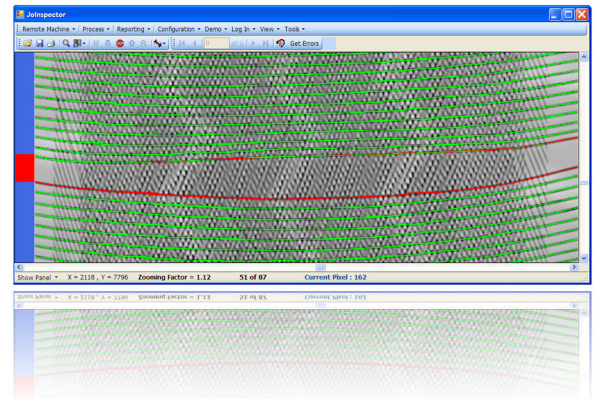
- > *High-tech and first-class product implementations*
- > *Prompt delivery of products and services*
- > *High quality products at affordable prices*
- > *Product Certification and Patenting*

Company Profile

>> Products

> JoInspector

JoInspector is a fully automated anomaly detection software which complements X-Ray based inspection systems and employs modern high performance image processing algorithms. Toolboxes including Ply, Breaker, Chafer, Bead analysis, as well as statistical process control (SPC) and reporting are integral parts of JoInspector.

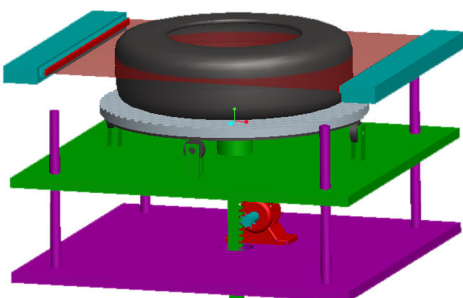
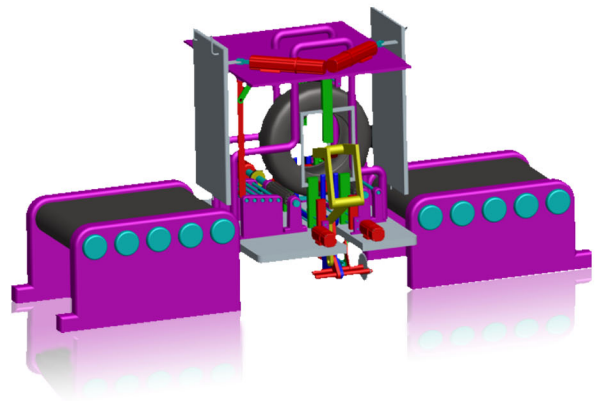


> JoTireLaser (JoTL)

JoTireLaser (JoTL) is a highly efficient solution for laser tire inspection. JoTL utilizes nonlinear surface regression calculations to estimate the tire base-surface; offering a precise suppression of lettering and patterns.

> Tire Visual Inspection Machine (TVI)

TVI is a fully automatic visual inspection machine which replaces the manual inspection. It provides full control both internal and external –sidewall and breaker– inspection and automatic nonlinear pattern and profile detection and anomaly recognition using two linear cameras. It is equipped with automatic tire loading, unloading and tire rejecting mechanisms.



> Computer Tomography for Tire Industry (CTTI)

The current machines utilize the two dimensional inspection either using X-Ray or laser. At JoVision we are investigating the future of the tire testing such that 3D data of the tire is measured and any kind of error can be detected using CT-scan.